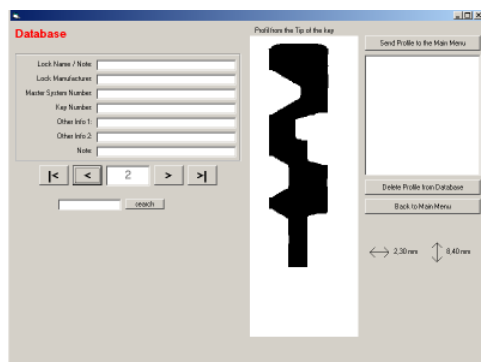


Pink-Box, Apdo. 206, 38300 La Orotava, España

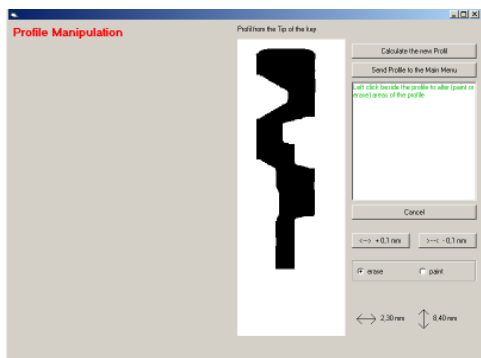
EasyEntriePC Light

Software for the “EasyEntrie” profile milling machine



Database

Key profiles measured with the “EasyEntrie” may be stored in the database as individual files. Additional notes and stored information can facilitate retrieval using the **SEARCH** function. Each profile is shown on the PC screen as a high-resolution image. To mill cut a blank, the stored data can be transferred to the “easyentrie” at any time. The complete database may be stored directly on a PC/laptop or on a central server to make it available to multiple users. Online access through the Internet is also possible.



Profile Manipulation

Any key profile may be altered on the PC screen. Unnecessary areas can be erased, indentations can be widened – e.g. to produce a master blank after measuring just a “normal” key.

Required Hardware/Software:

PC or Laptop with Win98, Win2000, Windows XP
 Pentium Processor (min. 200 MHz)
 Screen Resolution 800 x 600 (min.)
 Serial port

Installation

Switch off "EasyEntrie" and PC

Data cable PC<->"easyentrie"

Plug the round end of the enclosed connection cable into **socket 2** on the back of the "EasyEntrie"

Connect the serial end of the cable to the serial port (Com1 or Com2) of your PC

Important note: PC/laptops with USB ports only (and no serial interfaces) will require:
a USB to serial port adapter, or
a USB to RS232 adapter

The driver software for the adapter will enable a serial port to be simulated at the USB port

Program Installation

Run the "setup.exe" file from the CD-ROM

The software will be installed in the directory: "C:\Program Files\EasyEntriePc"

DO NOT alter this installation directory!

Switch on "EasyEntrie"

Program Start

Open the program with the "easyentrie" button in the Windows start menu (symbol: laughing face)
The main menu will appear automatically

Security Code / Initialization

The software will only function with the "EasyEntrie" it was delivered with.
Operation with another machine (different serial number!) is NOT possible.

Choose **PROGRAM OPTIONS** in the main menu, then select the serial port "EasyEntrie" is connected to

Choose **ALTER CODE** and fill in the security code delivered with your software package

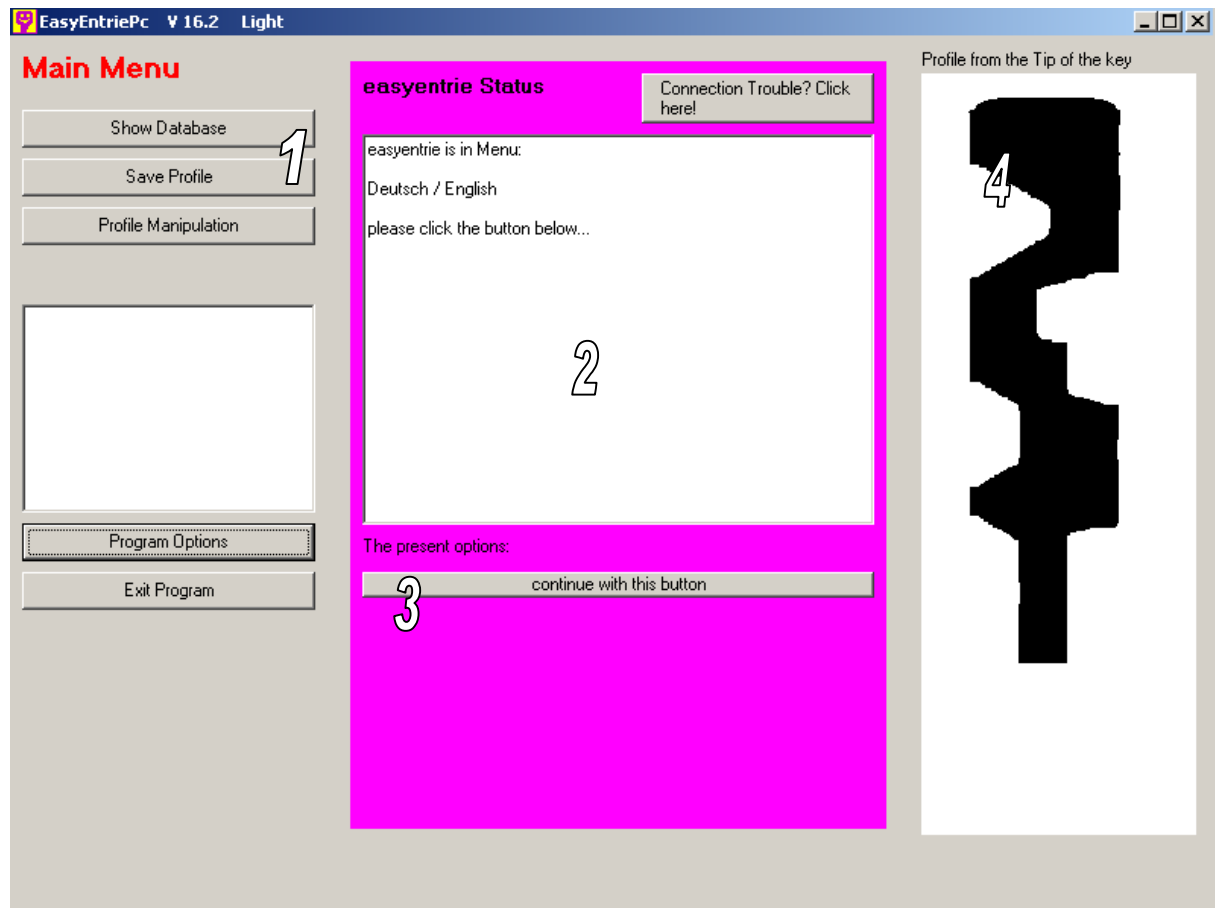
Choose **STORE CODE** to close the window

First Connection

If the program cannot find "EasyEntrie", please choose **CONNECTION TEST**

The installation is complete

Main Menu



The program opens in the main menu, which controls the connection to the “EasyEntrie” and access to all sub-menus. After leaving a sub-menu, you’ll return automatically to the main menu.

1. The buttons on the left are:

SHOW DATABASE – for access to all stored profiles

SAVE PROFILE – saves the current profile for future use or reference

PROFILE MANIPULATION – for altering key profiles

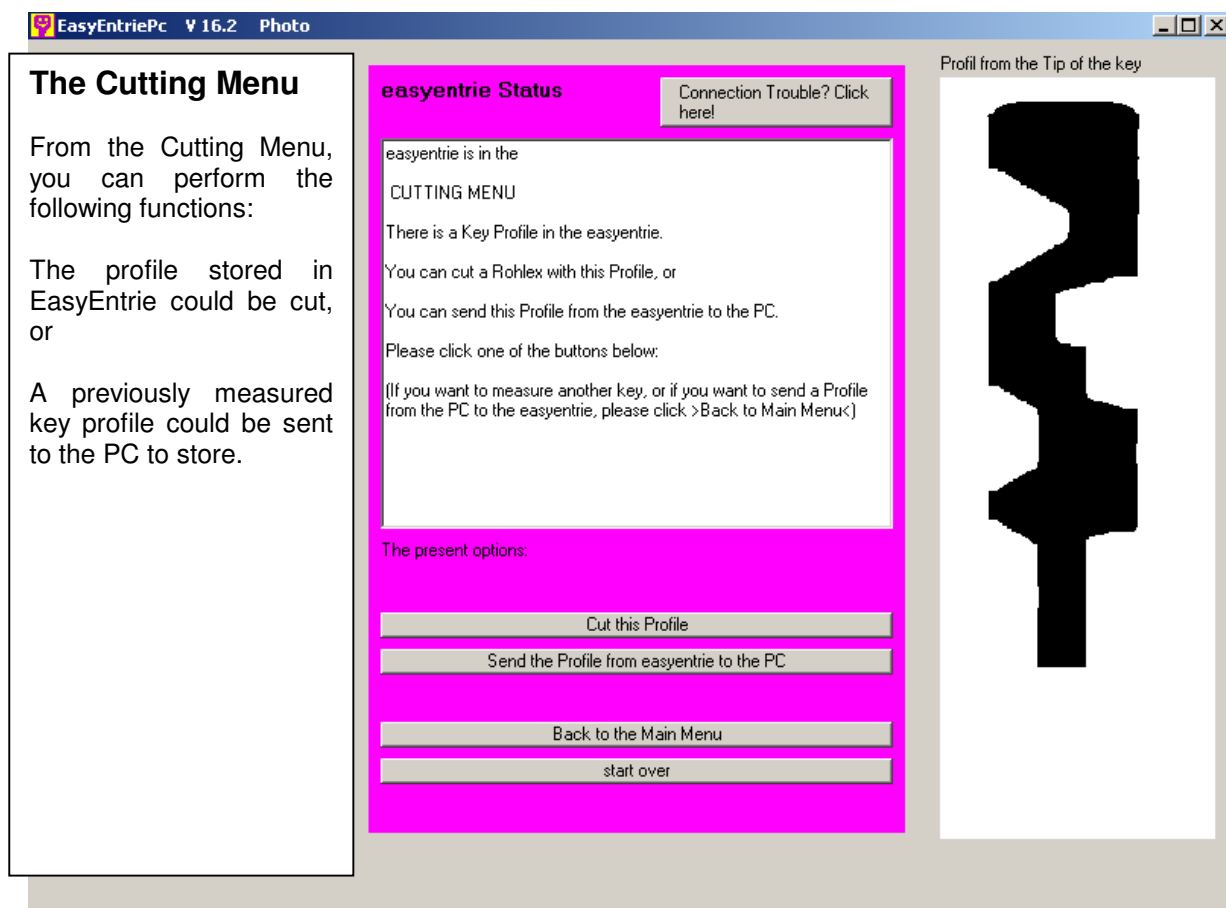
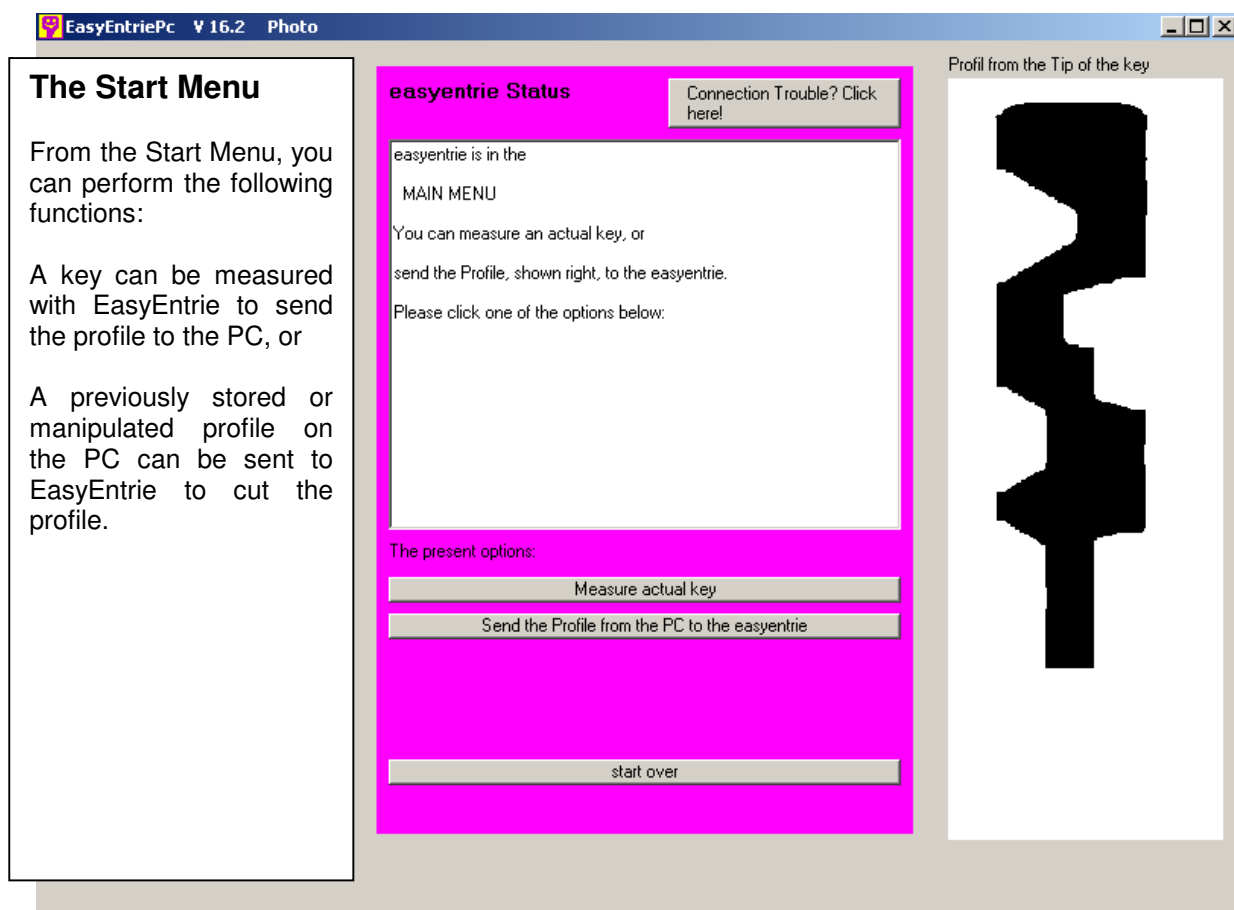
PROGRAM OPTIONS – to choose a serial port, change directories, or to enter the security code

2. The screen center is the control center of the “EasyEntrie” - always displaying its current status

3. The control buttons for the “EasyEntrie” - only the buttons usable in the present status are visible

4. On the right side the selected key profile is displayed (viewed from the tip)

Sub menus of “EasyEntrie”



The Database

Database

Lock Name / Note:

Lock Manufacturer:

Master System Number:

Key Number:

Other Info 1:

Other Info 2:

Note:

<| < 2 > >|

search

Profil from the Tip of the key

3

Send Profile to the Main Menu

4 Delete Profile from Database

Back to Main Menu

↔ 2,30 mm ↑↓ 8,40 mm

1. Here you can save information and text to identify and retrieve stored key profiles

2. These navigation buttons take you to the first, last, next or prior stored profile

3. The key profile enlarged

4. Available buttons:

SEND PROFILE TO THE MAIN MENU

Transfer the selected profile to the main menu, where it can be or manipulated or sent to "EasyEntrie"

DELETE PROFILE

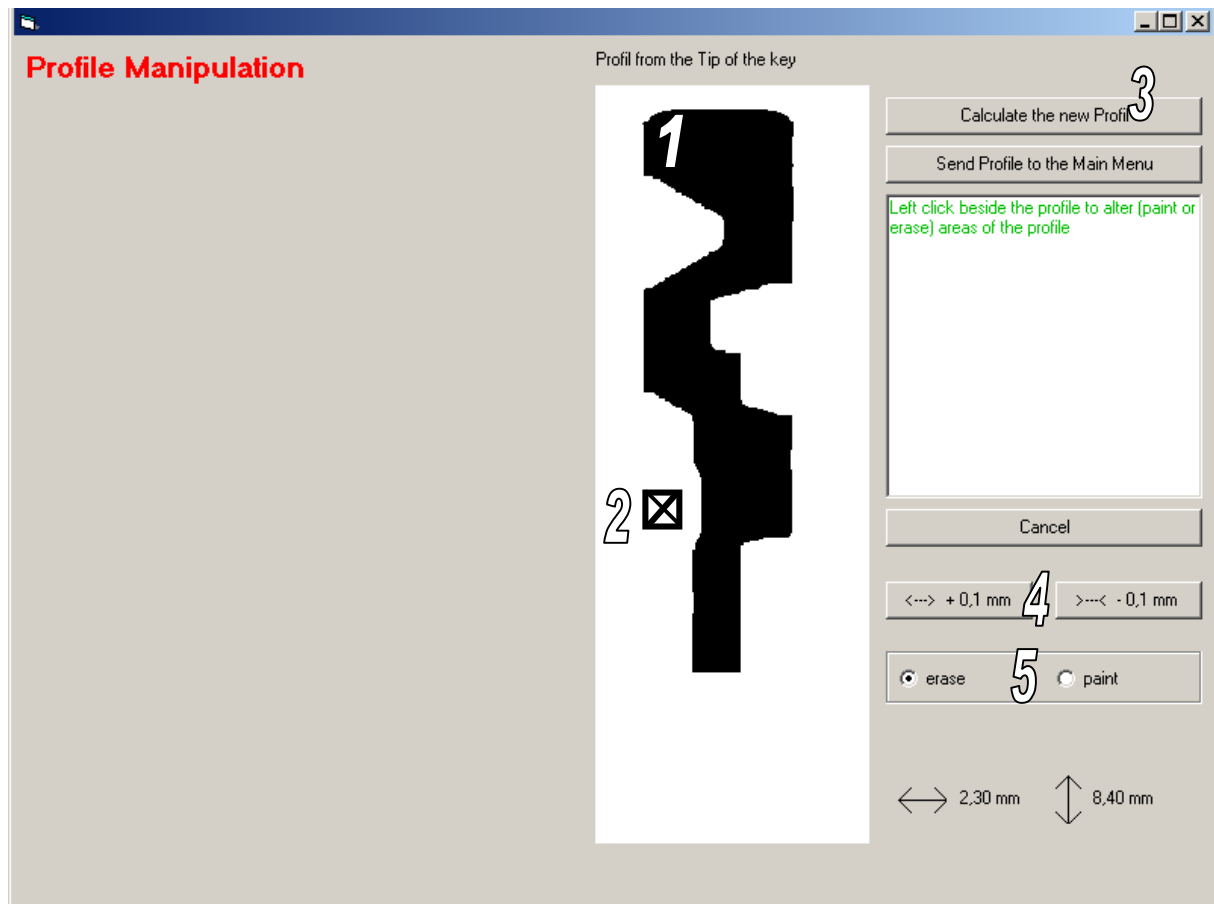
The current profile will be deleted from the hard drive

BACK TO THE MAIN MENU

Return to the main menu without transferring the profile.

5. Enter information to find profiles with matching text by searching the seven fields above

Profile Manipulation



1. The key profile is shown strongly magnified
2. Alter (paint or erase) sections of the profile by clicking on the left mouse button
3. Available buttons:

CALCULATE PROFILE

Recalculates the profile dimensions after altering the profile. The new profile is displayed in color.

SEND PROFILE TO THE MAIN MENU

The manipulated profile is transferred to the main menu, where it can be mill cut now or stored in the data base.

4. Left button increases, right button decreases the width of the profile
5. Select **ERASE** to delete pixels, or **PAINT** to add to areas of the profile

