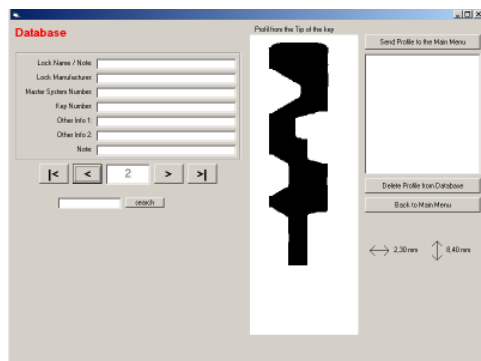


Pink-Box, Apdo. 206, 38300 La Orotava, España

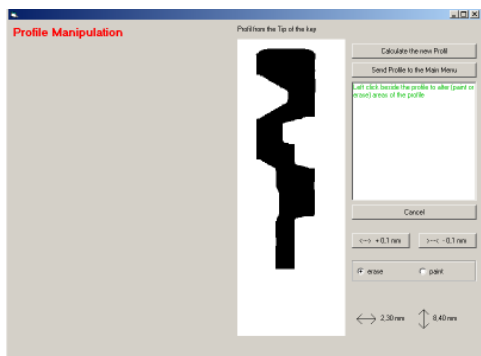
EasyEntriePC Photo

Software for the “EasyEntrie” profile milling machine



Database

Key profiles measured with the “EasyEntrie” may be stored in the database as individual files. Additional notes and stored information can facilitate retrieval using the **SEARCH** function. Each profile is shown on the PC screen as a high-resolution image. To mill cut a blank, the stored data can be transferred to the “easyentrie” at any time. The complete database may be stored directly on a PC/laptop or on a central server to make it available to multiple users. Online access through the Internet is also possible.



Profile Manipulation

Any key profile may be altered on the PC screen. Unnecessary areas can be erased, indentations can be widened – e.g. to produce a master blank after measuring just a “normal” key.

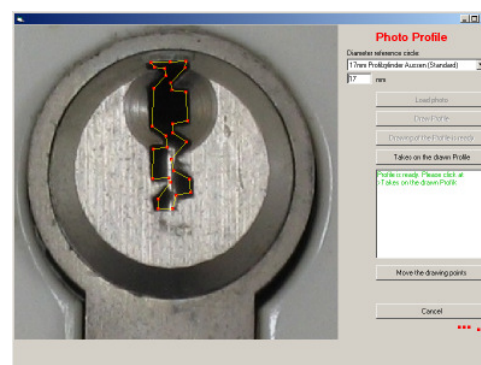


Photo Profile

This feature is part of our “Photo” program version– **meant only for authorities and law enforcement personnel.**

Take a frontal photo of a cylinder lock with any digital camera. Load the photo into the program and draw the key blank profile. Transfer the data to the “easyentrie” to mill cut a key blank.

Required Hardware/Software:

PC or Laptop with Win98, Win2000, Windows XP
 Pentium Processor (min. 200 MHz)
 Screen Resolution 800 x 600 (min.)
 Serial port

Installation

Switch off "EasyEntrie" and PC

Data cable PC<->"easyentrie"

Plug the round end of the enclosed connection cable into **socket 2** on the back of "EasyEntrie"

Connect the serial end of the cable to the serial port (Com1 or Com2) of your PC

Important note: PC/laptops with USB ports only (and no serial interfaces) will require:
a USB to serial port adapter, or
a USB to RS232 adapter

The driver software for the adapter will enable a serial port to be simulated at the USB port

Program Installation

Run the "setup.exe" file from the CD-ROM

The software will be installed in the directory: "C:\Program Files\EasyEntriePc"

DO NOT alter this installation directory!

Switch on "EasyEntrie"

Program Start

Open the program with "EasyEntrie" button in the Windows start menu (symbol: laughing face)
The main menu will appear automatically

Security Code / Initialization

The software will only function with the "EasyEntrie" it was delivered with.
Operation with another machine (different serial number!) is NOT possible.

Choose **PROGRAM OPTIONS** in the main menu, then select the serial port "EasyEntrie" is connected to.

Choose **ALTER CODE** and fill in the security code delivered with your software package.

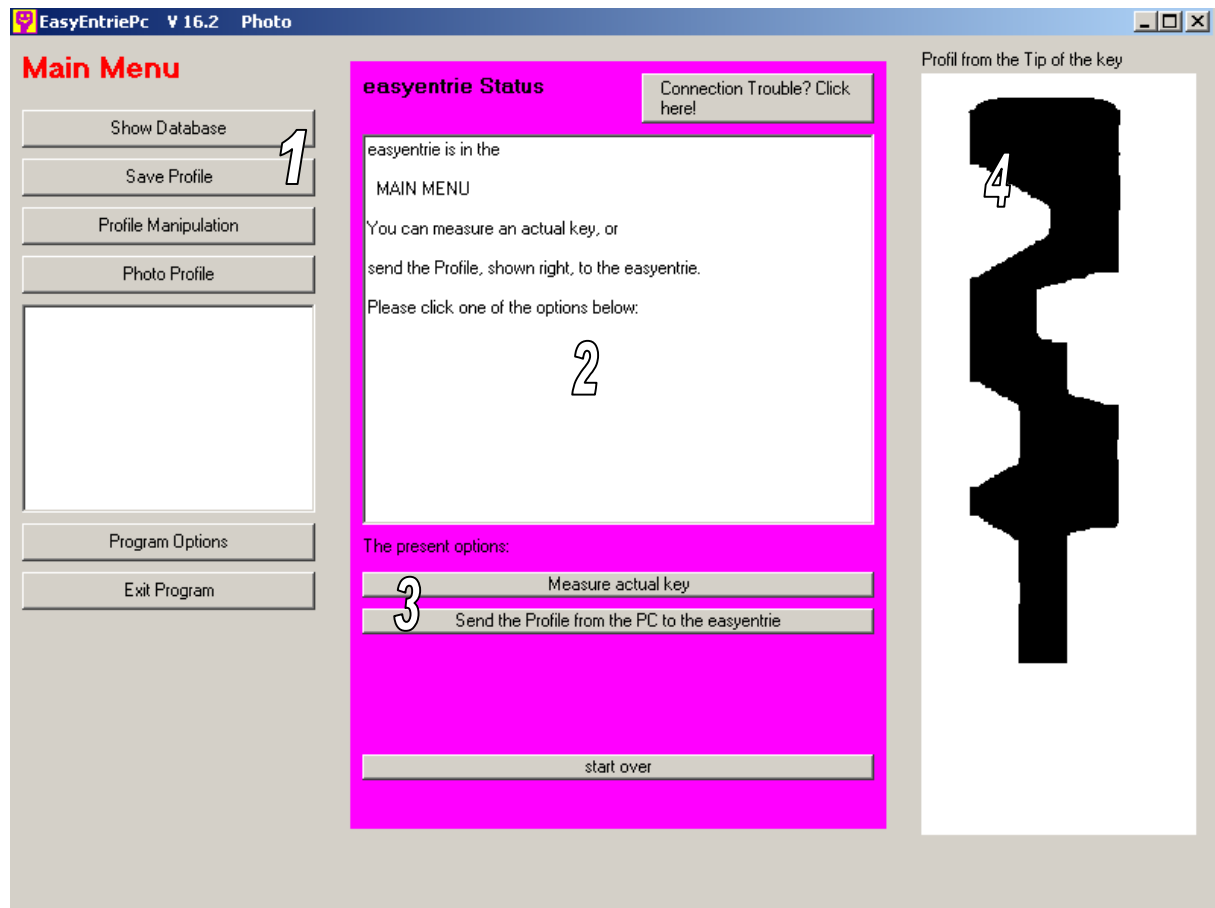
Choose **STORE CODE** to close the window.

First Connection

If the program cannot find "EasyEntrie", please choose **CONNECTION TEST**

The installation is complete

Main Menu



The program opens in the main menu, which controls the connection to the “EasyEntrie” and access to all sub-menus. After leaving a sub-menu, you’ll return automatically to the main menu.

1. The buttons on the left are:

SHOW DATABASE – for access to all stored profiles

SAVE PROFILE – saves the current profile for future use or reference

PROFILE MANIPULATION – for altering key profiles

PHOTO PROFILE – draw a key profile from a lock photo

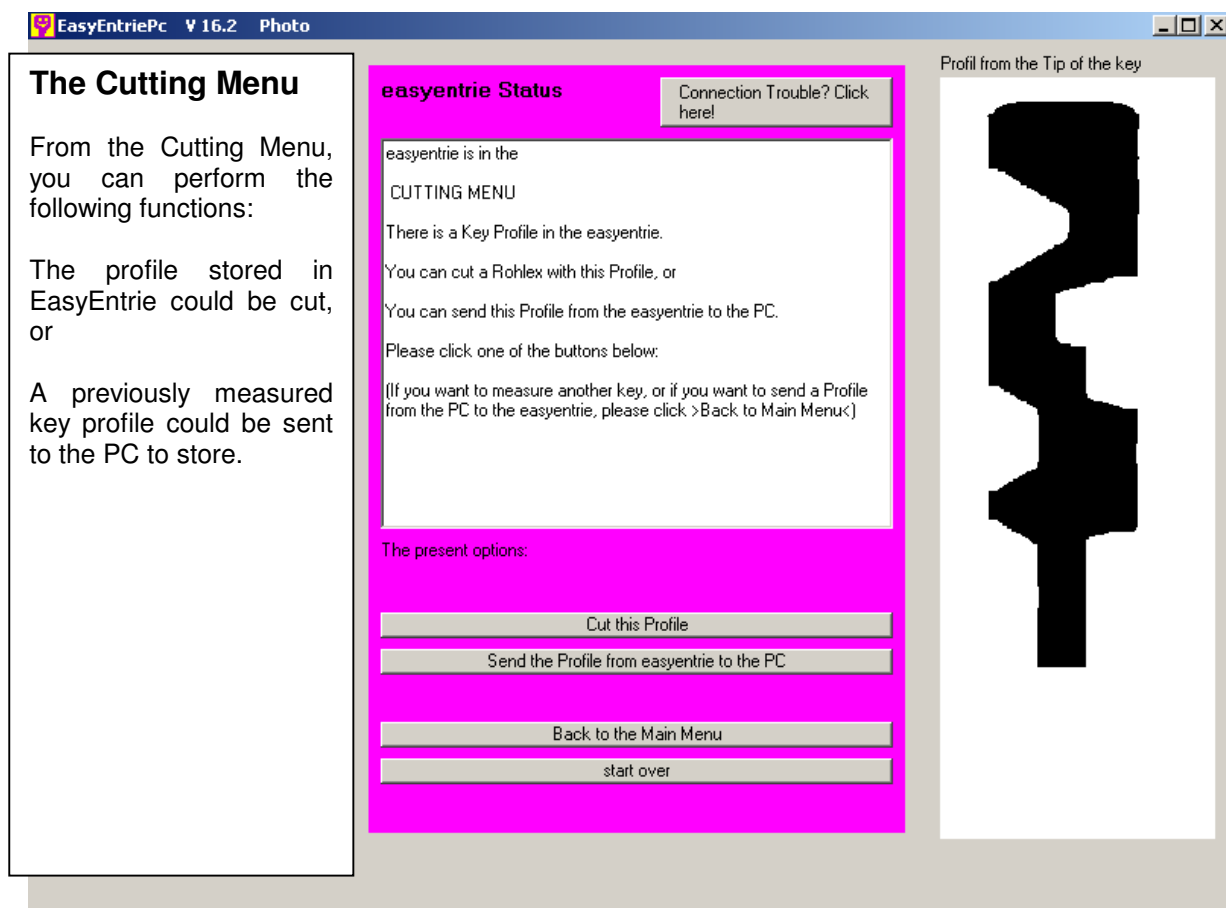
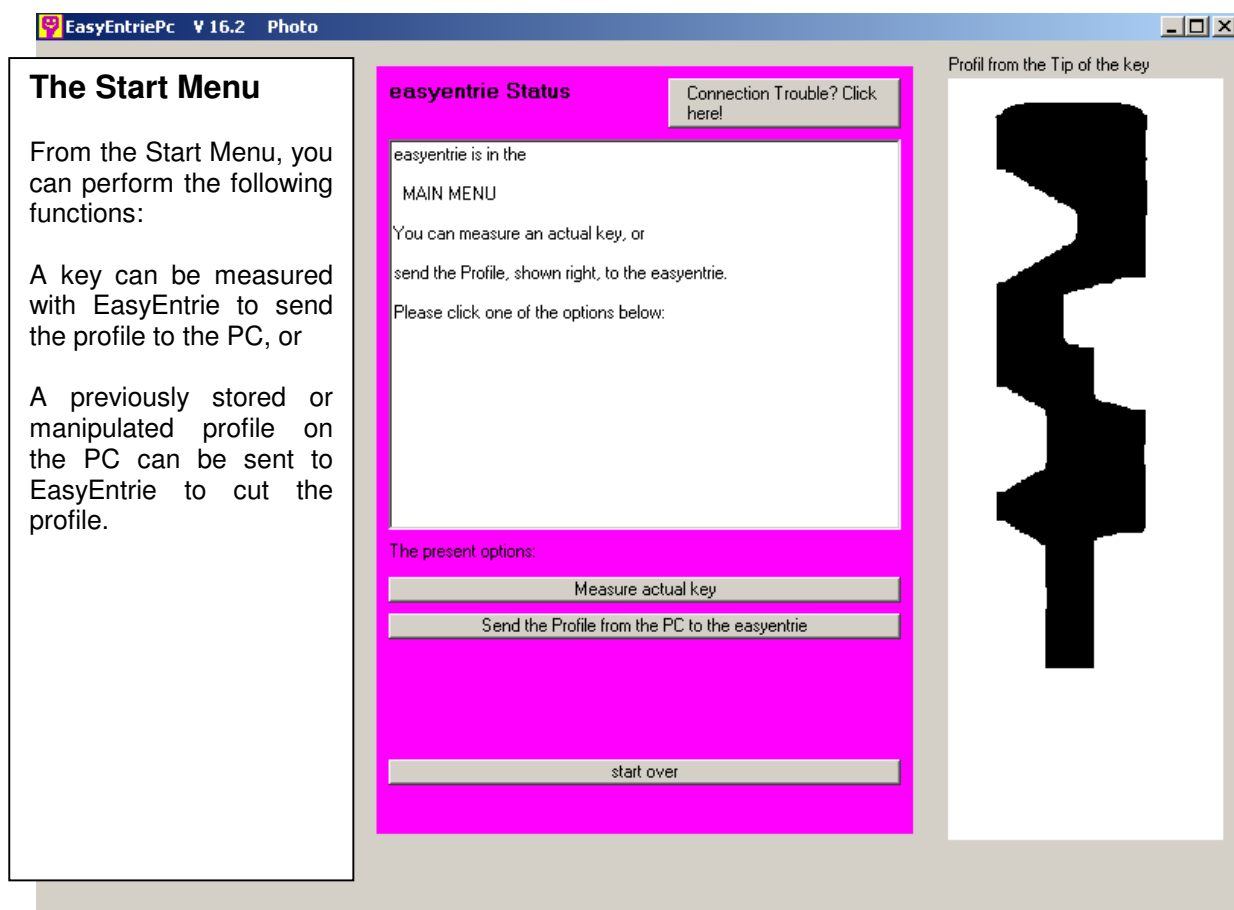
PROGRAM OPTIONS – to choose a serial port, change directories, or to enter the security code

2. The screen center is the control center of “EasyEntrie” - always displaying its current status.

3. The control buttons for “EasyEntrie” - only the useable buttons in the present status are visible.

4. On the right, the selected key profile is displayed (viewed from the tip)

Sub-menus of the “easyentrie”



The Database

Database

Lock Name / Note:

Lock Manufacturer:

Master System Number:

Key Number:

Other Info 1:

Other Info 2:

Note:

<| < 2 > >|

search

Profil from the Tip of the key

3

Send Profile to the Main Menu

4 Delete Profile from Database

Back to Main Menu

2,30 mm 8,40 mm

1. Here you can save information and text to identify and retrieve stored key profiles

2. These navigation buttons take you to the first, last, next or prior stored profile

3. The key profile enlarged

4. Available buttons:

SEND PROFILE TO THE MAIN MENU

Transfer the selected profile to the main menu, where it can be or manipulated or sent to "EasyEntrie"

DELETE PROFILE

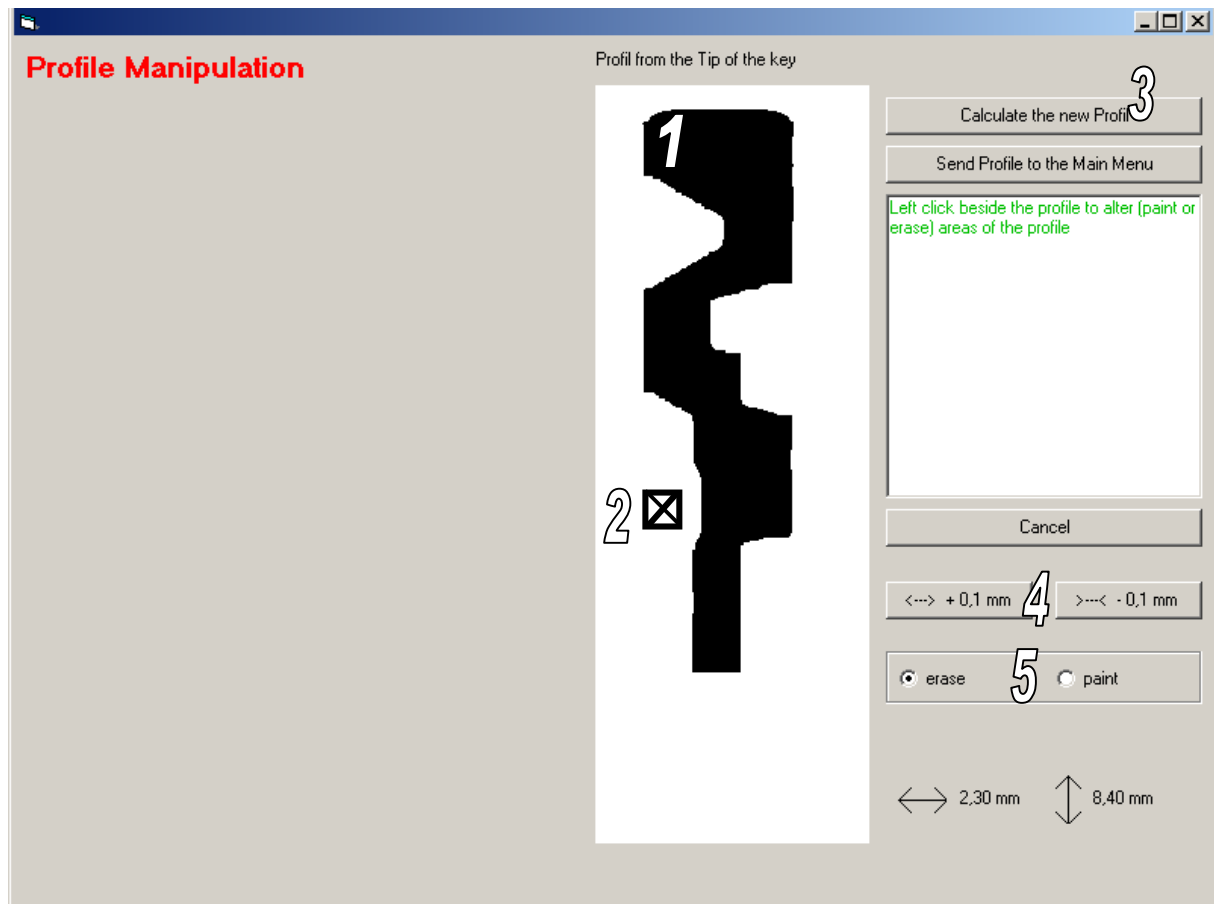
The current profile will be deleted from the hard drive

BACK TO THE MAIN MENU

Return to the main menu without transferring the profile.

5. Enter information to find profiles with matching text by searching the seven fields above

Profile Manipulation



1. The key profile is shown strongly magnified
2. Alter (paint or erase) sections of the profile by clicking on the left mouse button
3. Available buttons:

CALCULATE PROFILE

Recalculates the profile dimensions after altering the profile. The new profile is displayed in color.

SEND PROFILE TO THE MAIN MENU

The manipulated profile is transferred to the main menu, where it can be mill cut now or stored in the data base.

4. Left button increases, right button decreases the width of the profile
5. Select **ERASE** to delete pixels, or **PAINT** to add to areas of the profile

Photo Profile Option available to authorities and law enforcement personnel only!

Take a digital photo of the lock cylinder

For best results:

- DON'T use the camera's flash (if necessary, a flashlight will do better).
- DO use a tripod.
- DO use the camera's highest resolution.
- DO use the "macro" mode of the camera (if available).
- DO shoot from a distance of about 1 foot (30 cm).
- DO aim directly into the lock cylinder
- DO keep the camera square to the lock on all axes

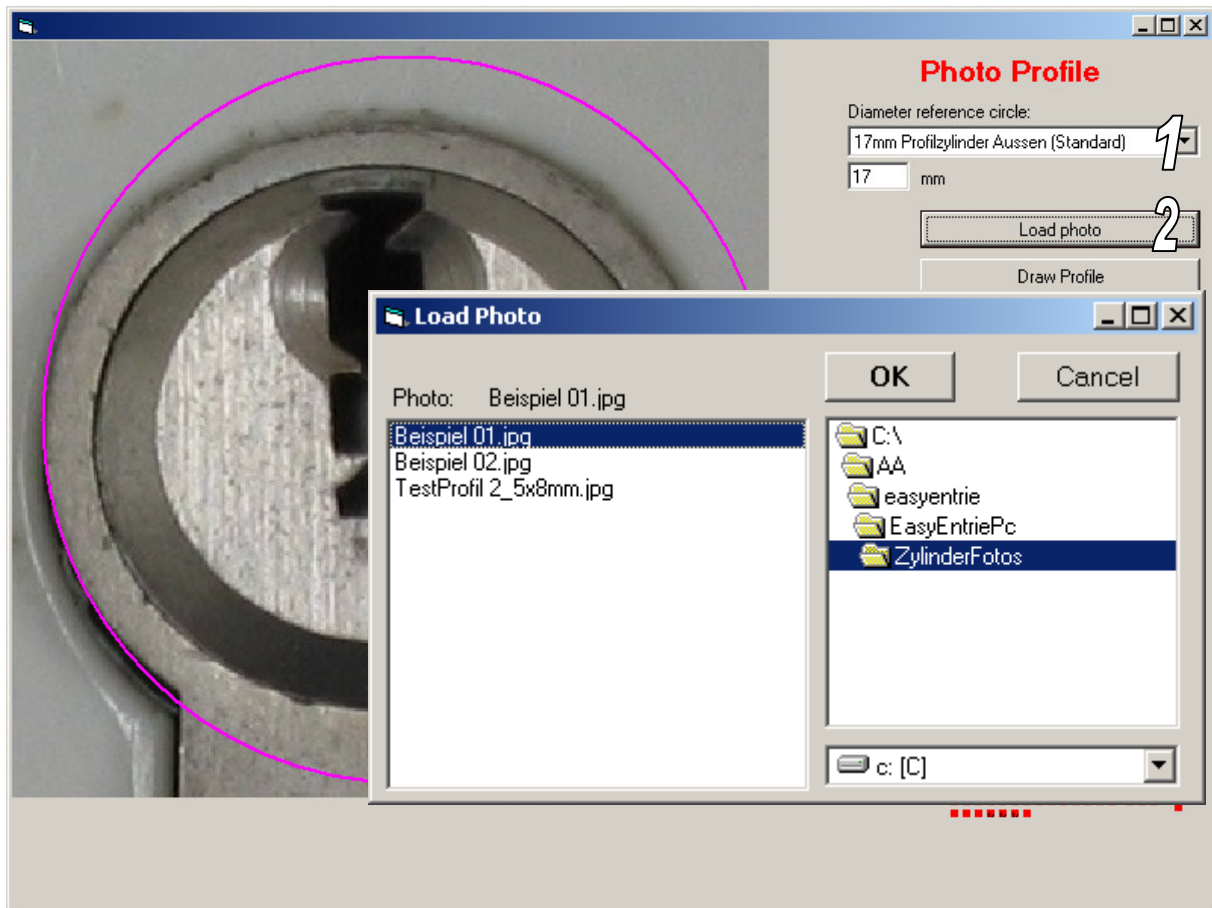
Using the camera software or any image editing program - e.g. Photoshop or Photoshop Elements, crop the photo like the picture shown below - the outside diameter of the cylinder has to remain uncut!

Save the picture as a JPEG (.JPG) file

The standard path is: "C:\Program Files\easyentriePc\ZylinderFotos" or the photo may be saved to a disk or other media



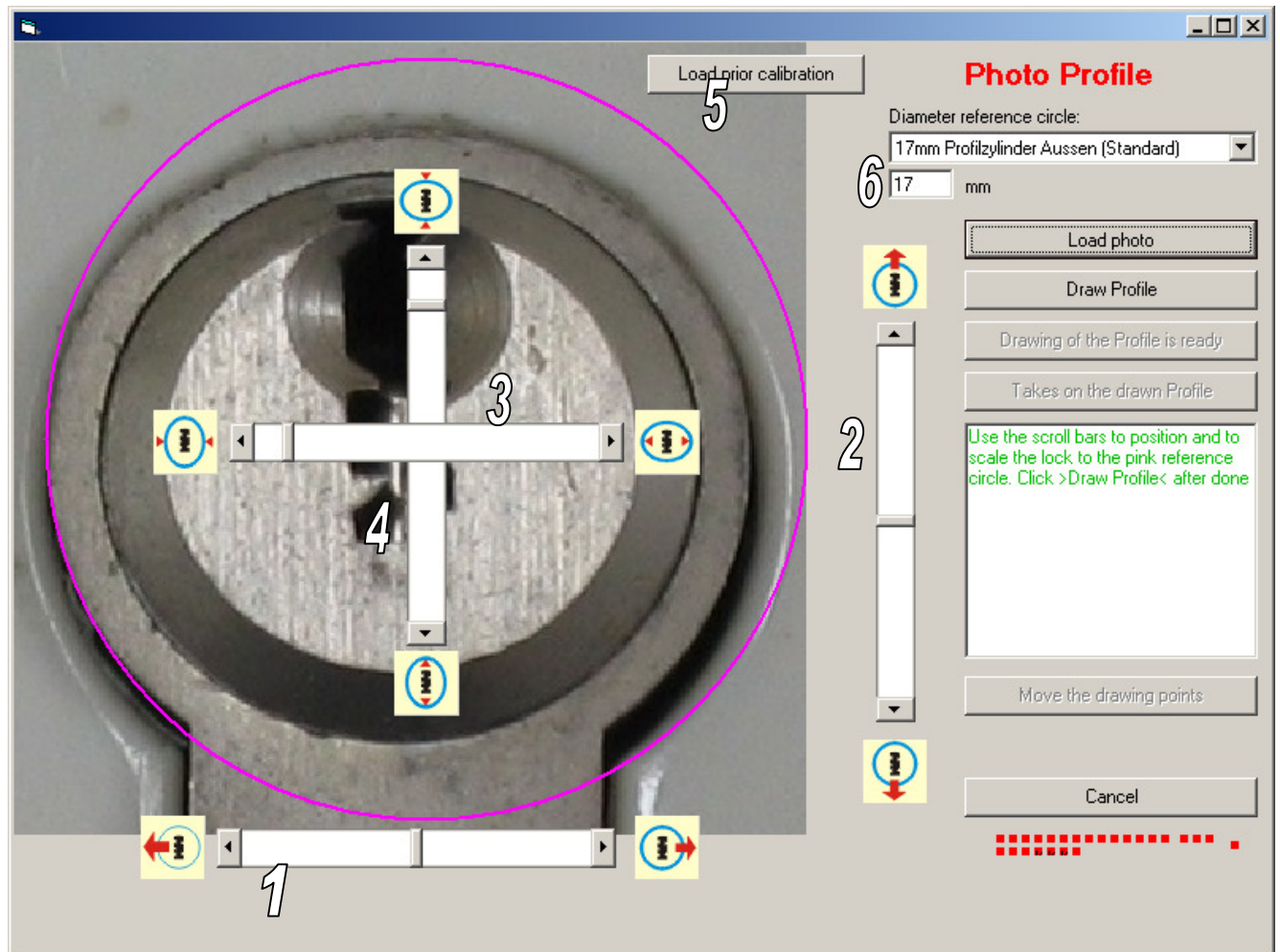
Load the Photo



1. Select the outside diameter of the cylinder lock.
The standard diameter of European profile cylinder locks is 17.00 mm.
The pink circle is the scaling reference, and may also be changed manually.

Important: Use an accurate diameter, so the profile will be properly scaled
2. Click the **LOAD PHOTO** button, select the photo of the lock (3) and click **OK**

Adjusting the Photo



After loading the photo, it is critical that the outside diameter of the lock or plug be adjusted (usually shifted and enlarged) to the size and position of the pink reference circle.

The slide bars (1-4) slide in two directions, as in most Windows software:

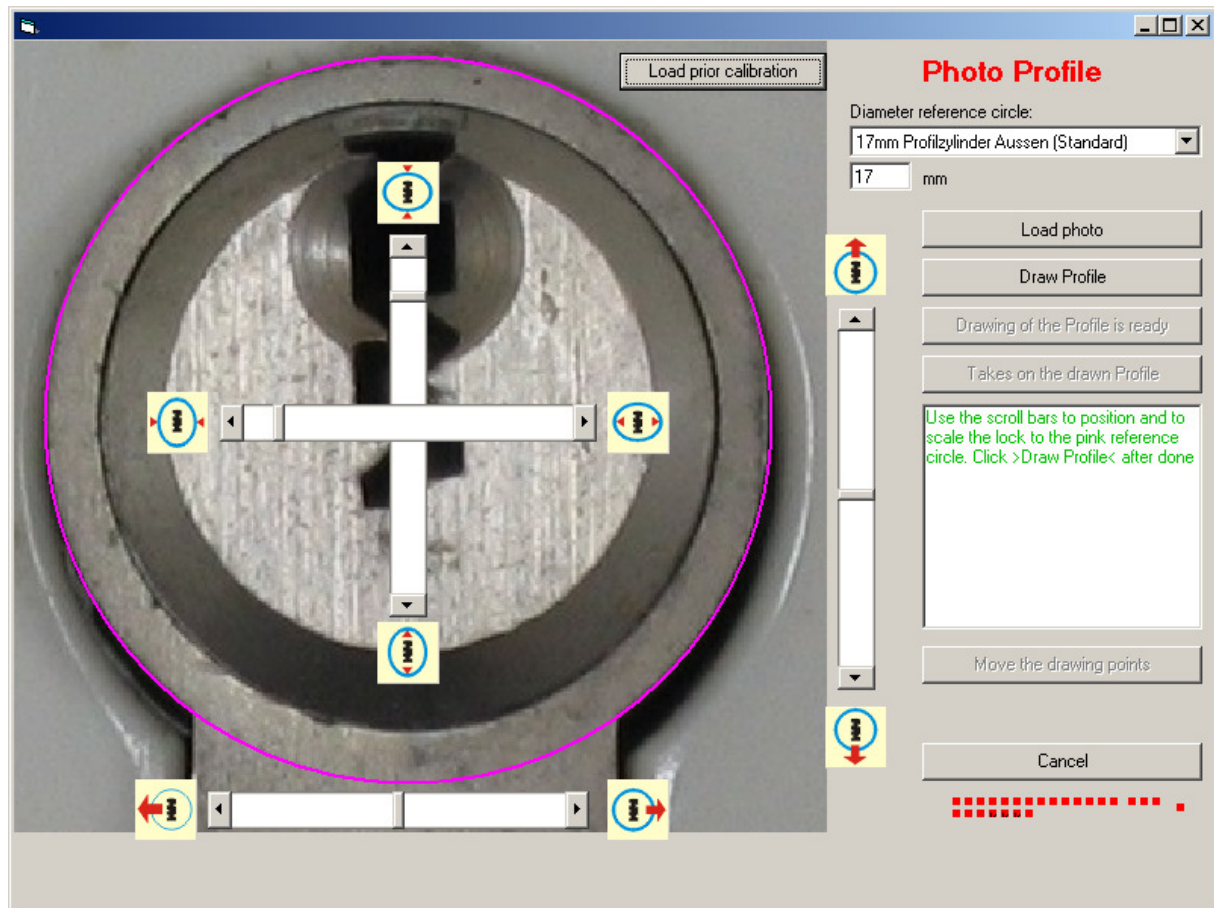
- To slide in small increments, click on the arrows
- To slide in larger increments, click beside the arrows

Slide bar functions:

1. shifts the photo left or right
2. shifts the photo up or down
3. makes the photo wider or narrower
4. makes the photo taller or shorter

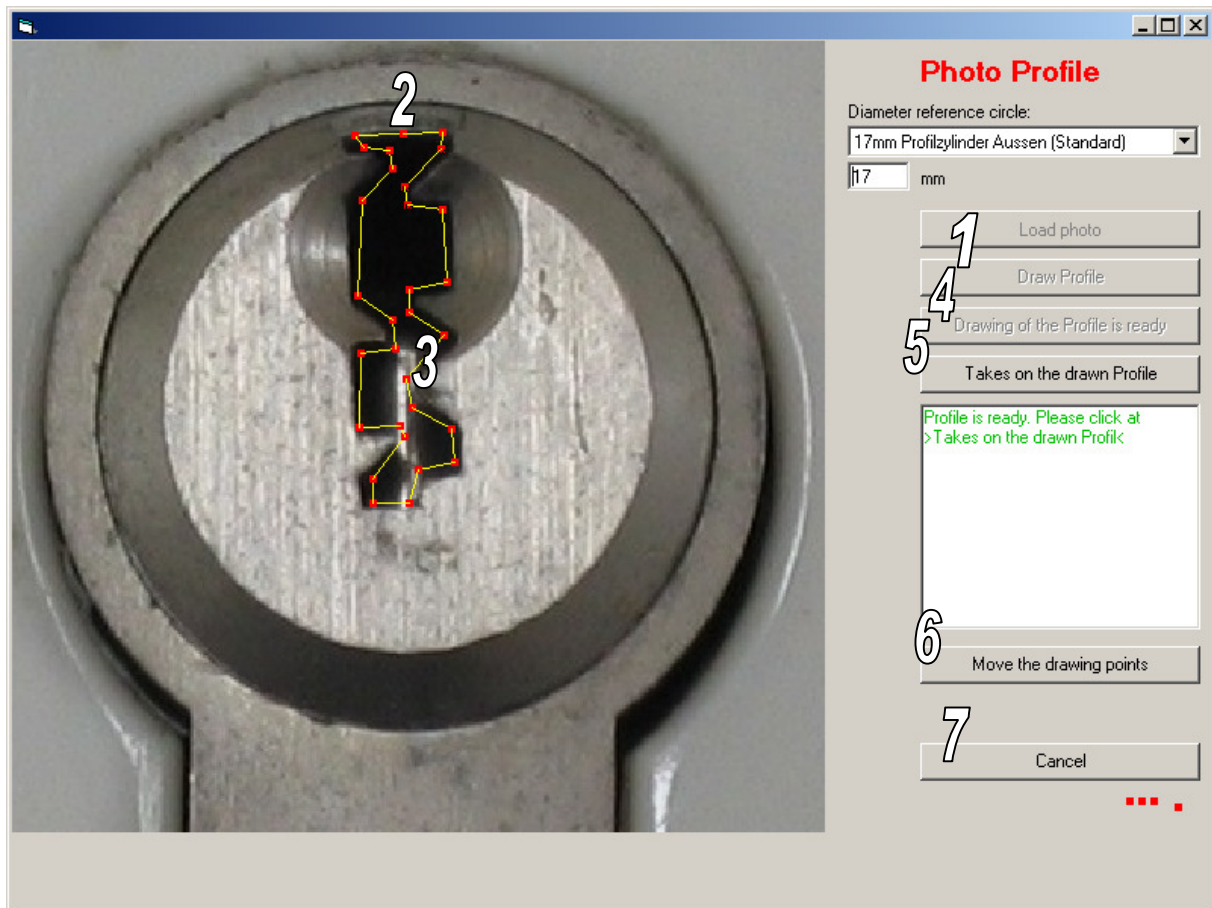
With the **LOAD PRIOR CALIBRATION** button. The latest photo calibration can be taken once more – if, e.g., you have to load and adjust the same photo again.

Photo Calibration



The outside diameter fits the pink reference circle properly

Drawing the Profile

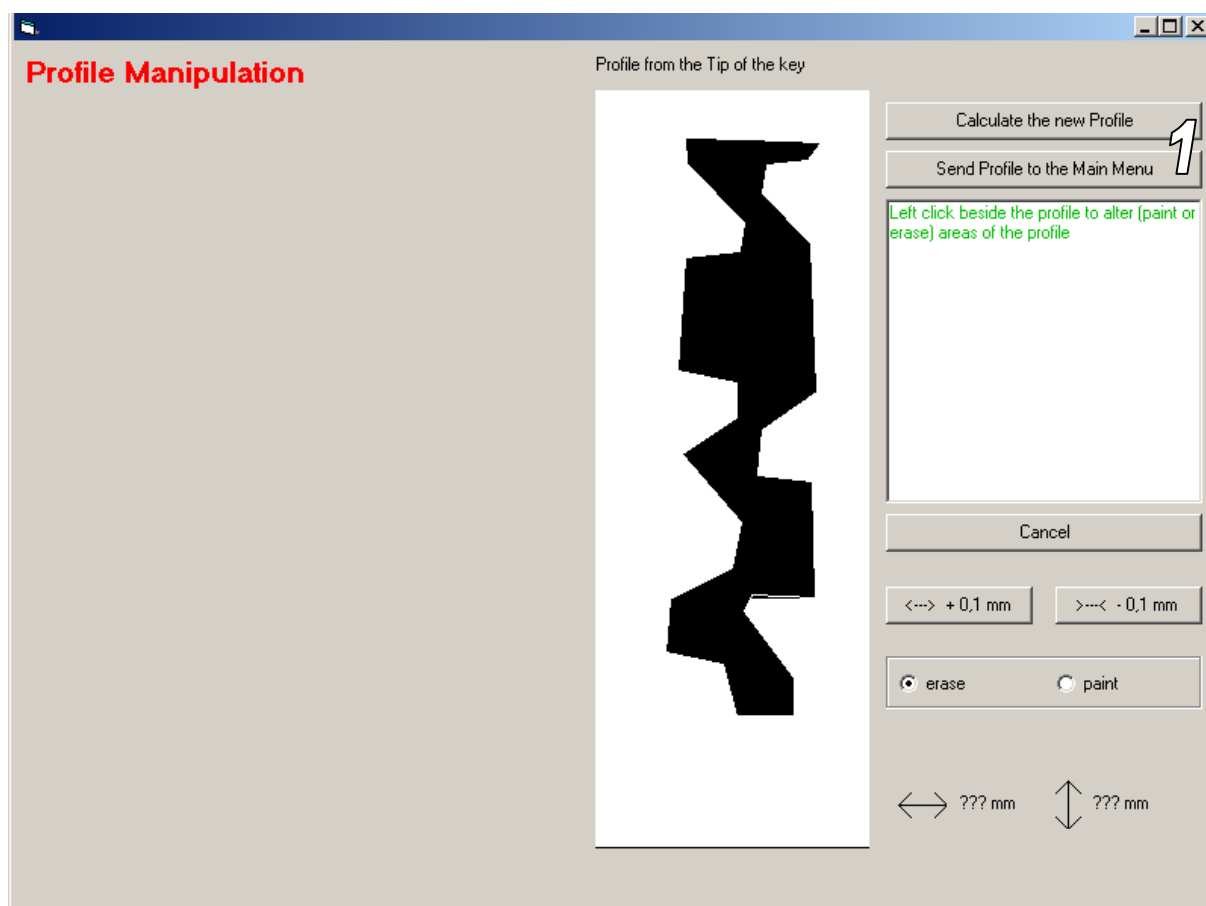


1. Click the **DRAW PROFILE** button.

Click to draw the profile points using the left mouse left button as in other drawing programs. (2, 3)
Tip: Don't be too exacting! It's better to make the profile a little bit smaller – like in this picture.

4. When the drawing is complete, click here
5. Loads the drawn profile and opens the Profile Manipulation screen
6. Use this button if necessary to move a drawing point.

Finished Profile



Final steps:

Click the **CALCULATE PROFILE** button.

After a few seconds the calculated profile will be displayed in red or yellow.
If there are white areas within the profile, they must be erased.

Finally click **SEND PROFILE TO THE MAIN MENU**

From here the profile may be sent to "EasyEntrie" to mill cut a key blank.

Don't forget to save the profile into the database for further manipulation or reference.

